

The  
Heritage  
Alliance



@Heritage\_NGOs  
#HeritageDay



Welcome to

# Heritage Day

# 2019

The  
Heritage  
Alliance

# Peter Ainsworth

Chairman, The Heritage Alliance

Welcome

#HeritageDay  
@Heritage\_NGOs

The  
Heritage  
Alliance

# Andrew Jackson

Tower Director

Tower of London (Historic Royal Palaces)

Welcome

#HeritageDay

@Heritage\_NGOs

@TowerOfLondon / @HRP\_palaces

The  
Heritage  
Alliance

# Nigel Huddleston MP

Minister for Sport, Tourism and Heritage, DCMS

#HeritageDay  
@DCMS  
@HuddlestonNigel



The  
Heritage  
Alliance

# Giles Smith

Head of Tourism, Heritage and Cultural Diplomacy

Questions and answers

#HeritageDay  
@DCMS

## Question from: The Confucius Institute

“The portfolio content of DCMS, and heritage in particular, is regularly highlighted as vital to the wellbeing, cultural life and economy of the nation. What can be done to enhance political stability for confidence for the sectors covered by the Department given the churn?”

#HeritageDay  
@DCMS  
@Confucius\_HWU

# The Heritage Alliance

## Question from: Building Crafts and Conservation Foundation

“The UK is very short of qualified and skilled crafts people to maintain and restore its over 5m (pre-1919) historic buildings. Support for training in FE colleges and also heritage apprenticeships are both practically non-existent. In 2019 Heritage Tourism brought £24.5bn into the Treasury. Could some of this be channelled into supporting the heritage education sector?”

#HeritageDay  
@DCMS  
@thebcc\_london

# The Heritage Alliance

## Question from: Global Heritage Fund

“What is the government’s plan to ensure that the British heritage sector is championed in a post-Brexit global economy as both a source of inbound trade (foreign students coming to study at our institutions, for example) and outbound in the export of British expertise globally?”

#HeritageDay  
@DCMS  
@thebcc\_london

# The Heritage Alliance

## Question from: The National Trust

“Given the importance of farmers and landowners to taking care of our heritage, and the integration of natural and historic features in our landscapes, how will the Environment Bill and Agriculture Bills help support the historic environment as well as the natural? Following that, why has heritage been excluded from the definition of the environment in the upcoming Environment Bill?”

#HeritageDay  
@DCMS  
@nationaltrust

## Question from: The National Trust

“How can local authorities and LEPs be supported to better care for and support investment in local heritage?”

#HeritageDay  
@DCMS  
@nationaltrust

# The Heritage Alliance

## Question from: CiFA and IHBC

“Mindful that the majority of our heritage is managed by local planning authorities, what plans does the Minister have with MHCLG to ensure that local historic environment services meet their obligations to the National Planning Policy Framework and continue to provide the other valued heritage services they provide to local communities? How can the sector support him/her?”

#HeritageDay

@DCMS

@InstituteArch @IHBCtweet

# The Heritage Alliance

## Question from: Honor Frost Foundation & The National Trust

“With COP26 in Glasgow this year there is a real opportunity to consider how every sector can be contributing the UK's net zero ambition. What do you think the heritage sector should be doing to address this challenge, and how will the UK Government support this activity? What steps will the Government take at COP26 to bolster our historic environment in tackling and adapting to climate change?”

#HeritageDay

@DCMS

@honor\_frost    @nationaltrust



# The Heritage Alliance

Question from: IHBC

“Does the Minister agree that a reduction or abolition of VAT on repairs and adaptation of existing buildings will encourage their re-use rather than redeveloping them, with the consequent benefit of less energy use and reduction in global warming?”

#HeritageDay  
@DCMS  
@IHBCtweet

# The Heritage Alliance

Question from: The Heritage Trust Network & Others

“Why is VAT still charged at 20% on repairs and 0% on new?”

#HeritageDay  
@DCMS  
@HTNmembers

# The Heritage Alliance

## Question from: Historic Religious Buildings Alliance

“We are really grateful to DCMS for all the support which you give to the heritage sector. But obviously the issues which we face also involve other Government Departments. How confident are you that your colleagues in MHCLG, Transport, Defra and HMT actually get the economic and social importance of investing in heritage?”

#HeritageDay  
@DCMS  
@hrballiance

# The Heritage Alliance

## Question from: Maritime Heritage Trust

“Local communities are increasingly sympathetic to the view that sight-seeing tourists should make a contribution to heritage funding via a tourist tax or other charge. What is Government doing to help create local financial instruments to enable this?”

#HeritageDay  
@DCMS  
@MaritimHeritage

# The Heritage Alliance

Question from: World Heritage UK & RESCUE, The British Archaeological Trust

“What action does the Government propose to take in view of deep concerns expressed by UNESCO’s World Heritage Committee about the proper protection of a number of UK World Heritage Sites, in particular Stonehenge, Avebury and Associated Sites threatened by the proposed A303 Expressway, and Liverpool Maritime Mercantile City, now on the List of World Heritage in Danger owing to inappropriate redevelopment plans?”

#HeritageDay

@DCMS

@WorldHeritageUK @rescue\_news

## Question from: Historic Houses

“Can the Minister update us on the government’s plans for supporting independent owners to tackle the £1.4 billion conservation backlog at historic houses across the country?”

#HeritageDay  
@DCMS  
@Historic\_Houses

The  
Heritage  
Alliance

# Sir Tim Laurence

Chairman, English Heritage

#HeritageDay  
@EnglishHeritage



Sir Tim Laurence

Chairman - English Heritage



**58** PREHISTORIC  
SITES



**53** ROMAN  
SITES



**66**  
CASTLES



**2** HILL  
FIGURES



**84**  
ECCLESIASTICAL  
SITES

**6** HISTORIC  
BRIDGES



**23** HISTORIC  
GARDENS



**3** MUNICIPAL  
BUILDINGS



**47**  
LONDON  
STATUES



**1**  
(VERY FAMOUS)  
BATTLEFIELD



**7**  
PALACES



**1** COLD WAR  
BUNKER

**27**  
FORTS  
&  
DEFENCES



**47**  
HALLS, HOUSES  
& DOMESTIC  
DWELLINGS

**3**  
DESERTED  
MEDIEVAL  
VILLAGES

ENGLISH HERITAGE  
OVER  
**900**  
LONDON  
BLUE PLAQUES



ENGLISH  
HERITAGE

A photograph of a family consisting of a man, a woman, and a child walking away from the camera through a large stone archway. The archway is made of heavy stone blocks and has large metal chains hanging from its sides. The ground is paved with cobblestones. In the background, there are more stone buildings and a cloudy sky.

1 MILLION MEMBERS

A photograph of a large crowd of people gathered in a grassy area, possibly a park or a festival. In the background, there are large stone ruins and a white tent. The scene is outdoors with trees and a cloudy sky.

6.3 MILLION VISITORS

A photograph of a worker wearing an orange protective suit and a white hard hat, working on a large, curved structure. The structure appears to be part of a ship or a large building. The worker is standing on a platform or scaffolding. The background shows more of the structure and some scaffolding.

SPENDING 45% MORE  
ON CONSERVATION

A photograph of two people wearing high-visibility vests with the word "VOLUNTEER" on the back, standing in a grassy area. In the background, there is a large crowd of people and a white tent. The scene is outdoors with trees and a cloudy sky.

3,500 VOLUNTEERS





ENGLISH  
HERITAGE





ENGLISH  
HERITAGE





ENGLISH  
HERITAGE





ENGLISH  
HERITAGE









ENGLISH  
HERITAGE





ENGLISH  
HERITAGE





ENGLISH  
HERITAGE





ENGLISH  
HERITAGE





ENGLISH  
HERITAGE





ENGLISH  
HERITAGE





ENGLISH  
HERITAGE





1 MILLION MEMBERS



6.3 MILLION VISITORS



SPENDING 45% MORE  
ON CONSERVATION



3,500 VOLUNTEERS



ENGLISH  
HERITAGE

**SIR TIM LAURENCE, CHAIRMAN**



The  
Heritage  
Alliance

# Peter Ainsworth

Chairman, The Heritage Alliance

#HeritageDay  
@Heritage\_NGOs

The  
Heritage  
Alliance

# Refreshment break

Please return to your seats by 12pm.

#HeritageDay  
@Heritage\_NGOs

The  
Heritage  
Alliance

# Launch of Heritage Counts

Adala Leeson, Head of Social and Economic Analysis  
and Evaluation, Historic England

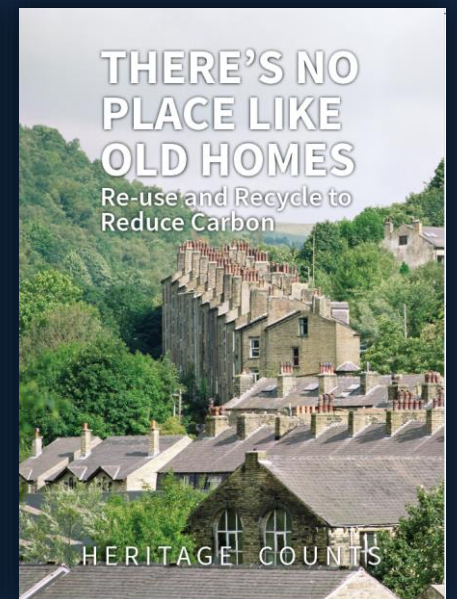
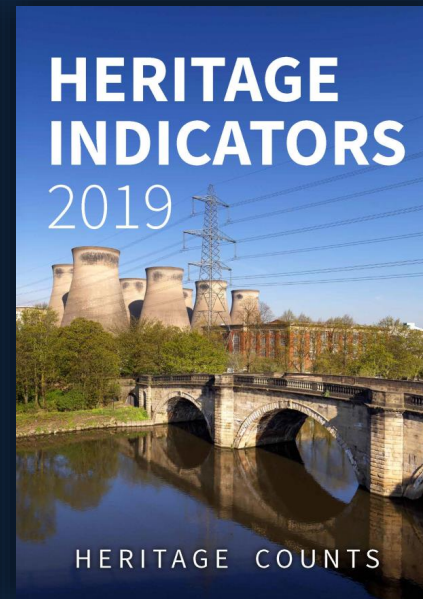
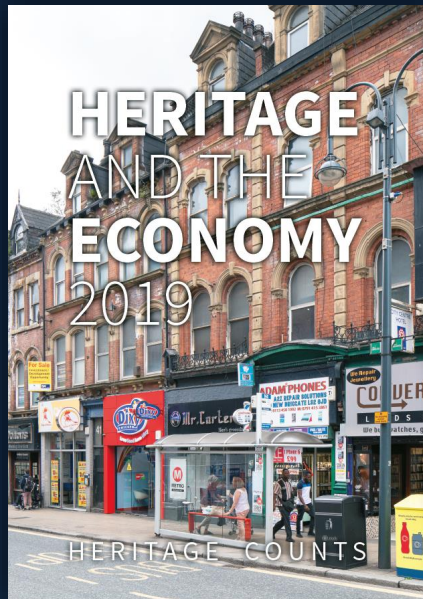
#HeritageDay  
@HistoricEngland



Historic England

# HERITAGE COUNTS 2019

The annual audit of England's heritage



Adala Leeson

Head of Socio-Economic Analysis and Evaluation  
Historic England

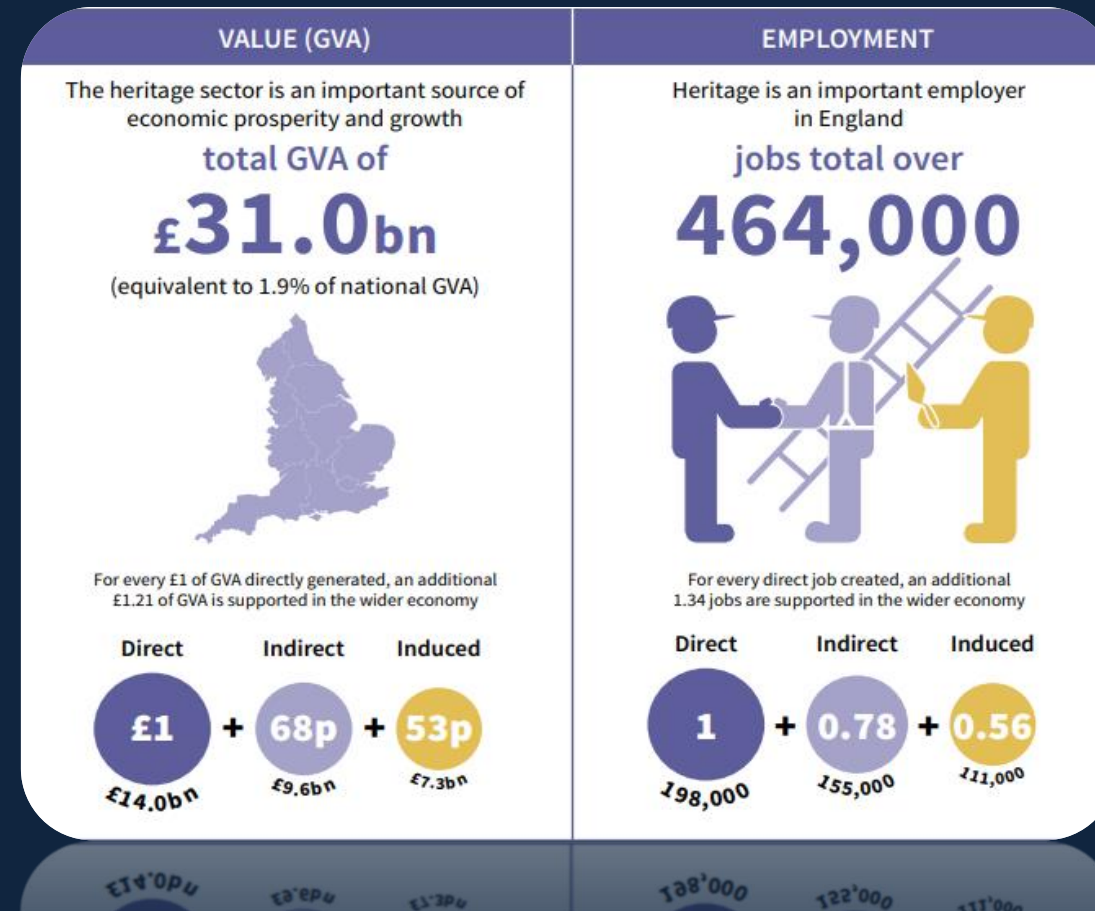
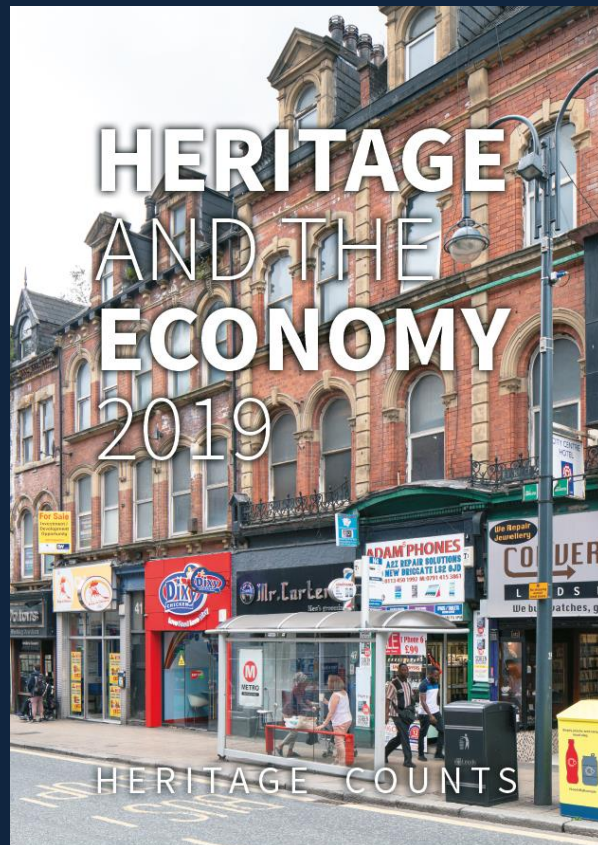




Historic England

[www.heritagecounts.org.uk](http://www.heritagecounts.org.uk)

# Heritage is an important source of economic prosperity and growth

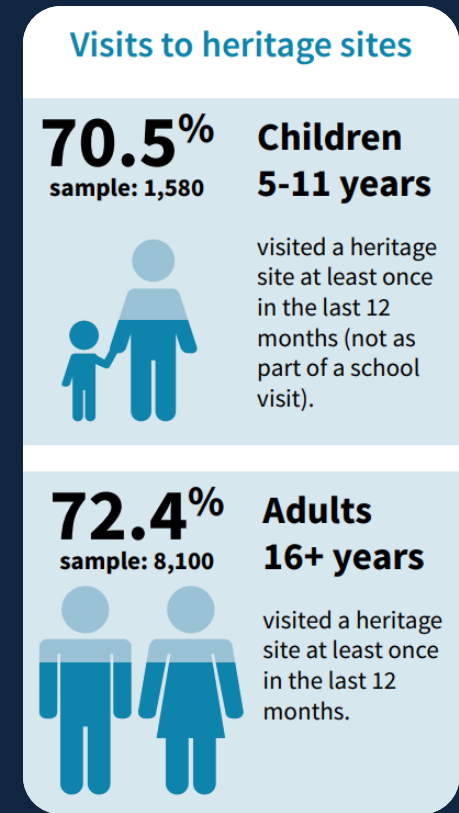
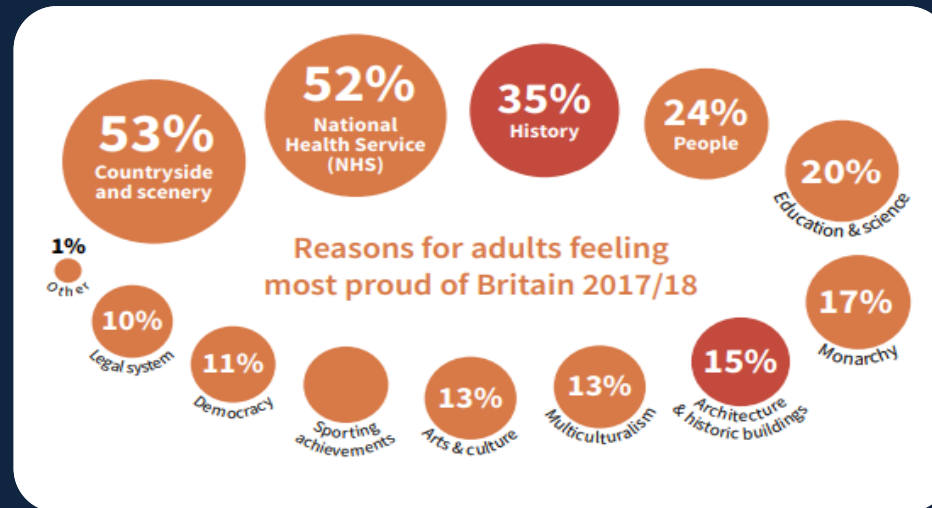




Historic England

[www.heritagecounts.org.uk](http://www.heritagecounts.org.uk)

Heritage plays a significant role in society, enhancing our wellbeing and quality of life, improving the way places are perceived

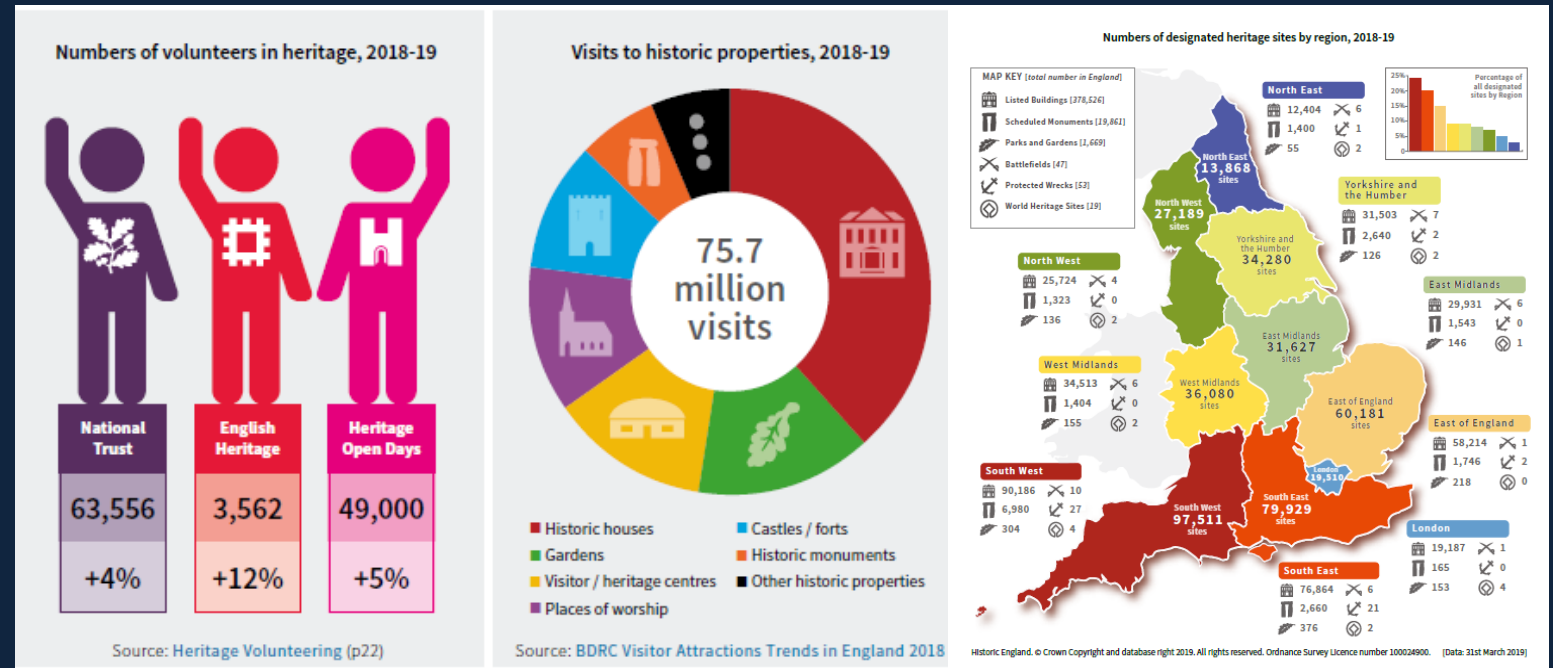
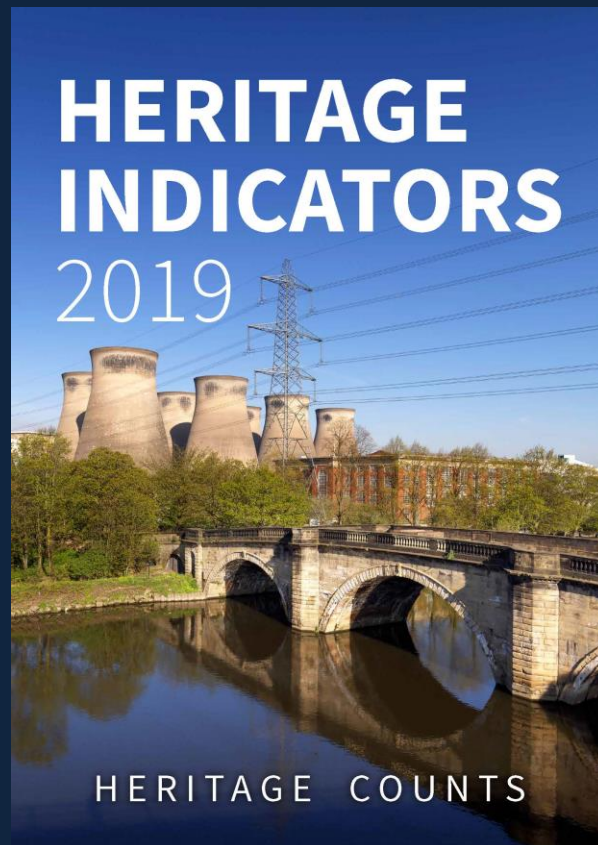




Historic England

[www.heritagecounts.org.uk](http://www.heritagecounts.org.uk)

Since 2002, the heritage sector has collected a large number of datasets and indicators updated annually



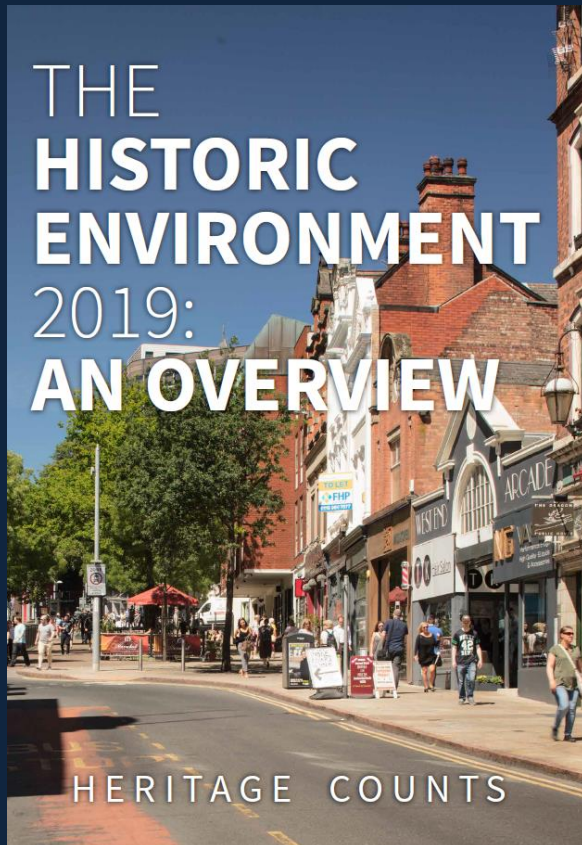




Historic England

[www.heritagecounts.org.uk](http://www.heritagecounts.org.uk)

The Overview presents key developments in the heritage sector over the past 12 months.



- Updates on the sector and strategic developments
- Changes to the funding and resource landscape
- Heritage policy and management updates
- Planning system changes in national and local planning policy
- Participation and capacity building

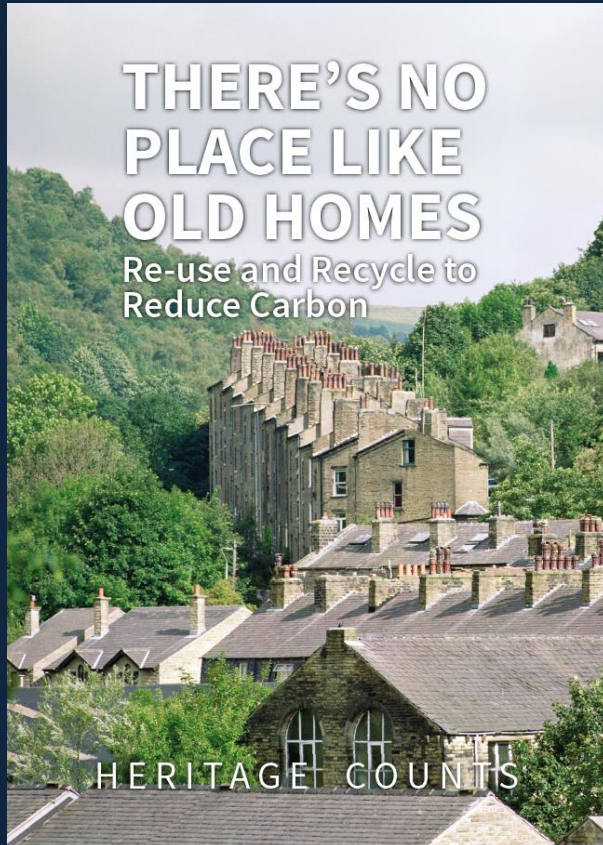




Historic England

[www.heritagecounts.org.uk](http://www.heritagecounts.org.uk)

# There's no place like old homes: Re-use and Recycle to Reduce Carbon



## Carrig Conservation International: A life cycle assessment of carbon in historic buildings

Victorian Terrace



Converted Chapel



Before

After

Demolish & New Build



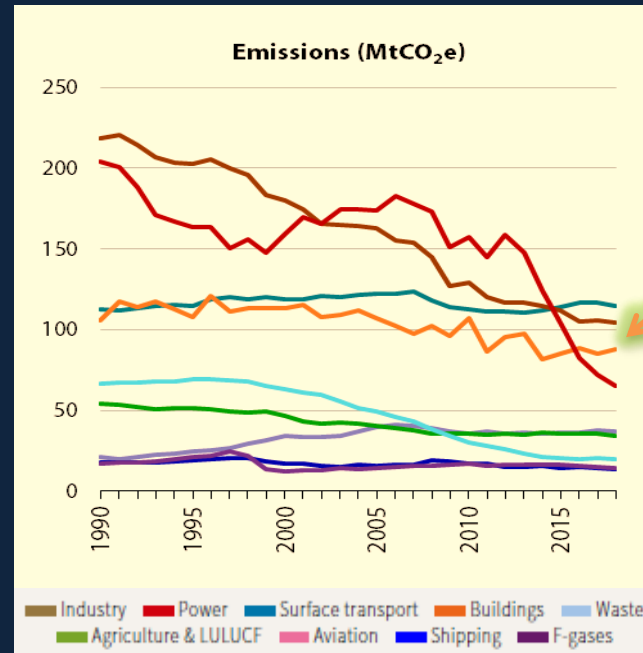
Historic England

[www.heritagecounts.org.uk](http://www.heritagecounts.org.uk)

## There's no place like old homes: Context



The UK is **the first** G7 nation to make a legally binding **commitment to becoming carbon neutral by 2050**



**Buildings are the 3<sup>rd</sup> largest** greenhouse gas emitting sector in the UK

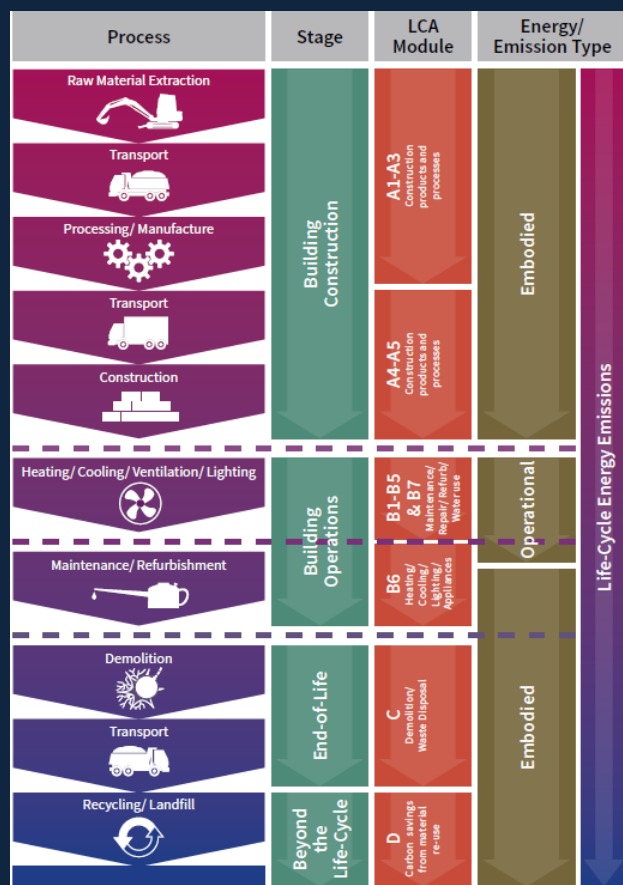




Historic England

[www.heritagecounts.org.uk](http://www.heritagecounts.org.uk)

# There's no place like old homes: A whole life approach



Source: Carrig (2019)

- Up to **one third** of carbon from a new building are embodied emissions.
- Addressing embodied carbon in buildings must become a priority.

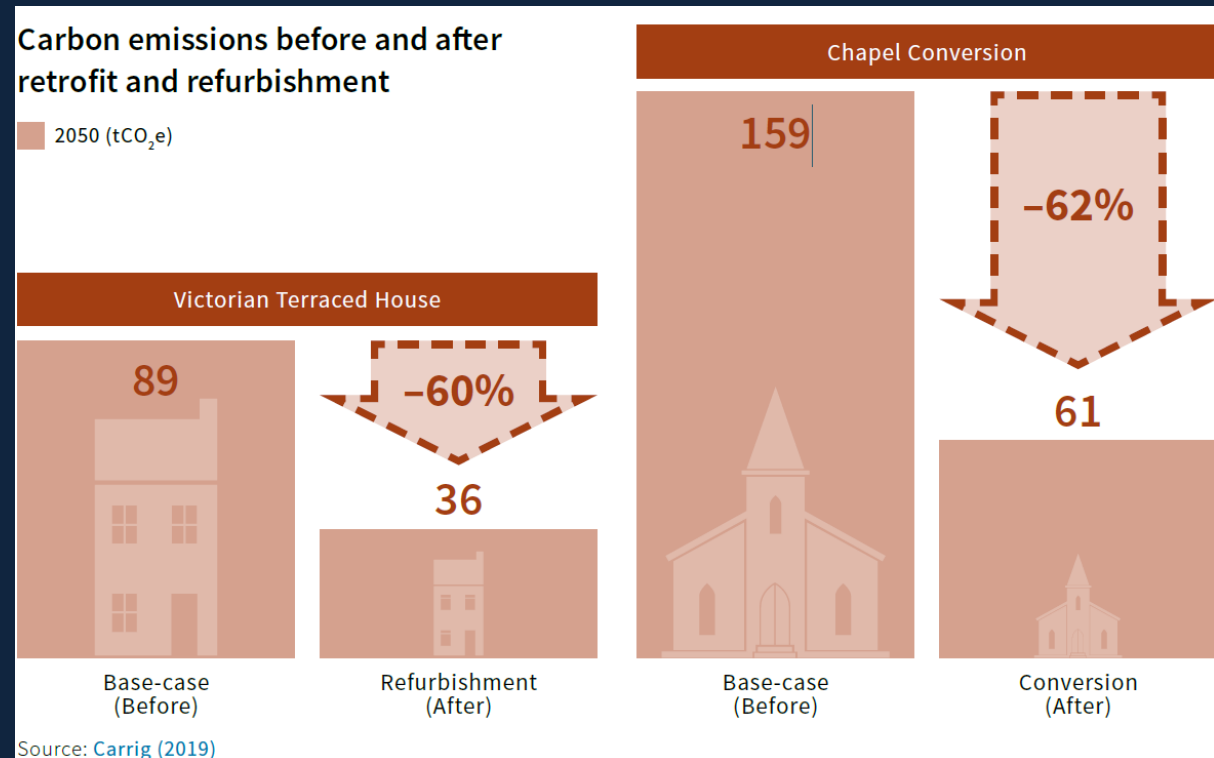




# There's no place like old homes:

## Reducing carbon in the built historic environment

- We can dramatically reduce carbon in the built historic environment through retrofit and refurbishment
- The sooner we do the greater the impact on carbon





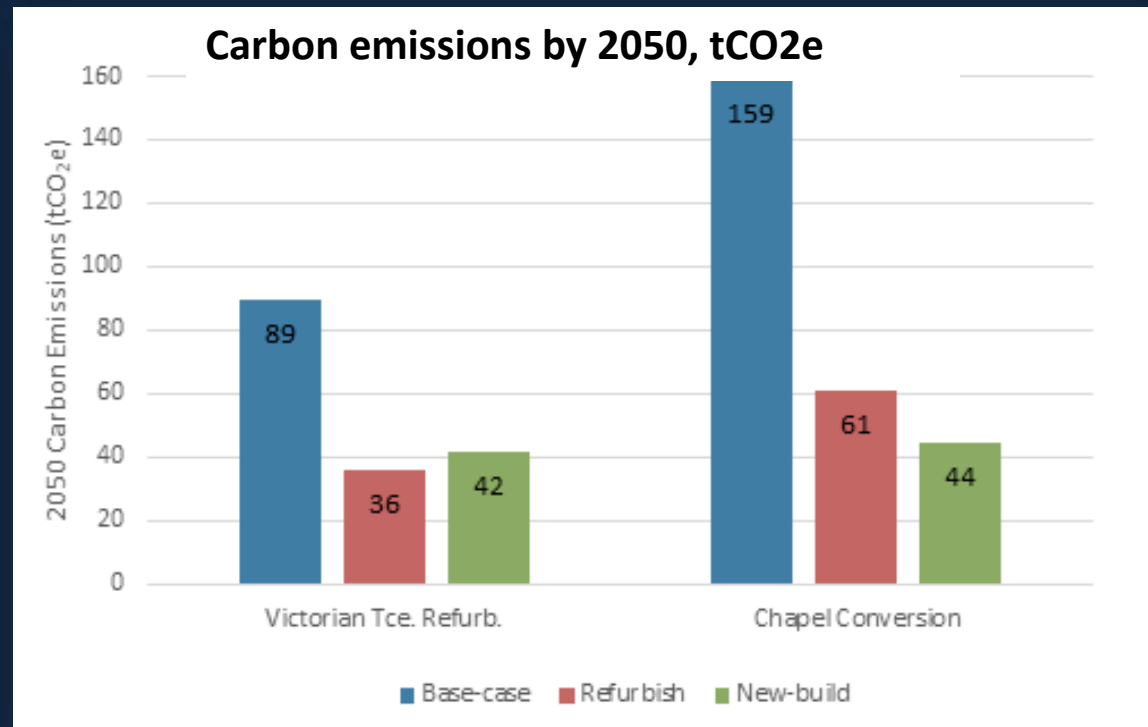
Historic England

[www.heritagecounts.org.uk](http://www.heritagecounts.org.uk)

## There's no place like old homes:

Reducing carbon in the built historic environment

- A typical historic building will emit less carbon than a new build by 2050
- But how we refurbish and retrofit impacts whole life carbon emissions





Historic England

[www.heritagecounts.org.uk](http://www.heritagecounts.org.uk)

# There's no place like old homes:

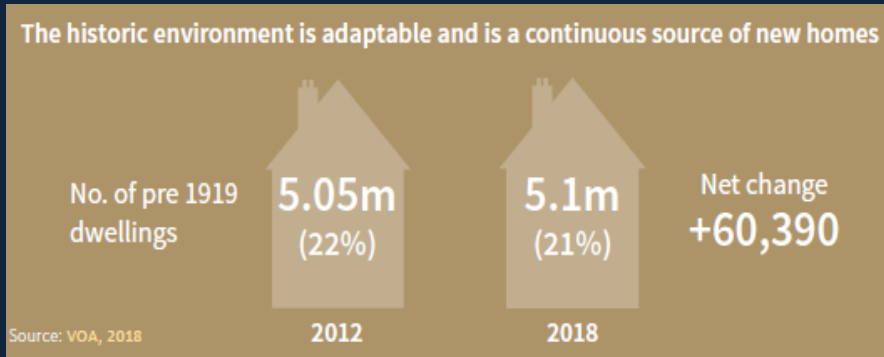
Towards net zero

We urgently need to tackle carbon in buildings : Reuse first

- Under-used or un-used historic assets provide opportunities for **reuse** to **reduce** carbon.

Longer lifespans to **reduce** embodied carbon.

**VAT reform!**



Demolition emissions alone account for

Up to **7%** of a new buildings carbon emissions over 60 years



Historic England

[www.heritagecounts.org.uk](http://www.heritagecounts.org.uk)

# There's no place like old homes

## Towards net zero

We urgently need to tackle carbon in buildings: Collaborative research and innovation

- A centre for excellence, innovation and scientific research:

- What works? What doesn't work for buildings?

Develop Life Cycle Assessment methodology

Collect more and better data

Disseminate

**80%** buildings in 2050 have already been built





Historic England

[www.heritagecounts.org.uk](http://www.heritagecounts.org.uk)

# There's no place like old homes

Towards net zero

We urgently need to tackle carbon in buildings:  
Changing behaviours

“

*People represent the least understood aspect of retrofit, and introduce the most uncertainty around effectiveness, making future work around lifestyle and behaviour change particularly important*

”

(Lannon and Green, 2019)

- Look out for Heritage Counts 2020!





Historic England

# THANK YOU

Adala Leeson

Head of Socio-Economic Analysis and Evaluation  
Historic England

The  
Heritage  
Alliance



# Ecclesiastical's Heritage Heroes Awards

#HeritageDay  
@Ecclesiastical  
@Heritage\_NGOs

The  
Heritage  
Alliance



# 10 years of Ecclesiastical's Heritage Heroes Awards

#HeritageDay  
@Ecclesiastical  
@Heritage\_NGOs



The  
Heritage  
Alliance



#HeritageDay  
@Ecclesiastical  
@Heritage\_NGOs

# Heritage Heroes 2010



Peter Vacher



The  
Heritage  
Alliance



#HeritageDay  
@Ecclesiastical  
@Heritage\_NGOs

# Heritage Heroes 2011



**Inayat Omarji**

All Souls Crompton Community Centre  
Trust



**Ffestiniog & Welsh Highland  
Railways in Gwynedd**



The  
Heritage  
Alliance

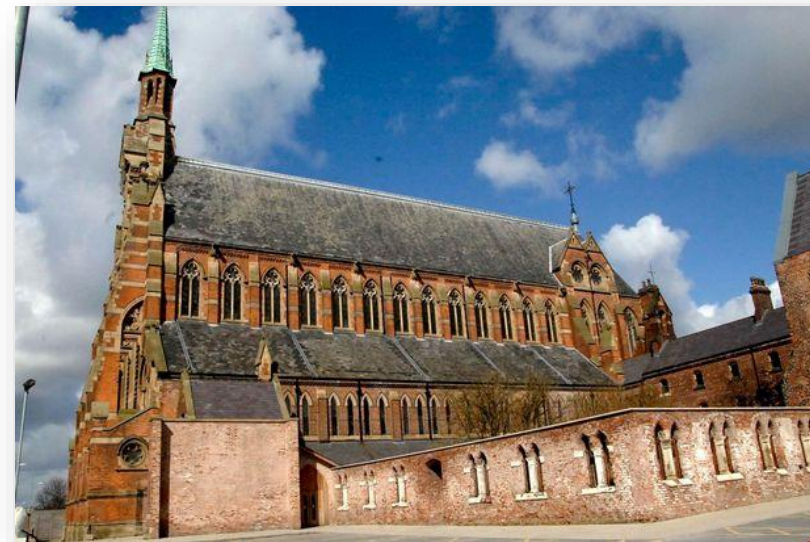


#HeritageDay  
@Ecclesiastical  
@Heritage\_NGOs

# Heritage Heroes 2012



Paul and Elaine  
Griffiths





The  
Heritage  
Alliance



#HeritageDay  
@Ecclesiastical  
@Heritage\_NGOs

# Heritage Heroes 2013



## Portland Works

The  
Heritage  
Alliance



#HeritageDay  
@Ecclesiastical  
@Heritage\_NGOs

# Heritage Heroes 2014



Save Preston Bus Station  
Campaign



Howsham Mill



The  
Heritage  
Alliance



#HeritageDay  
@Ecclesiastical  
@Heritage\_NGOs

# Heritage Heroes 2015



## John Lambourn

Maritime Heritage Trust





The  
Heritage  
Alliance



#HeritageDay  
@Ecclesiastical  
@Heritage\_NGOs

# Heritage Heroes 2016



**Mike Slinn**

Dronfield Medieval Hall Barn



**David Williams**

English Heritage

The  
Heritage  
Alliance



#HeritageDay  
@Ecclesiastical  
@Heritage\_NGOs

# Heritage Heroes 2017



**David Martyn**

King's Weston Action Group



**Norman Hudson**

Country Houses Foundation



The  
Heritage  
Alliance



#HeritageDay  
@Ecclesiastical  
@Heritage\_NGOs

# Heritage Heroes 2018



**Maggie Faultless**

All Saint's Church Alton Priors



**Maria Perks**

Heritage Trust Network



The  
Heritage  
Alliance



# Ecclesiastical's Heritage Heroes Awards 2019

#HeritageDay  
@Ecclesiastical  
@Heritage\_NGOs

The  
Heritage  
Alliance



# Ecclesiastical's Heritage Heroes Awards 2019 Shortlisted Selection

#HeritageDay  
@Ecclesiastical  
@Heritage\_NGOs

After

HERITAGE LINCOLNSHIRE



## Mr Dave Hagen

For his work on the  
**Holbeach Bunker  
Restoration Project**



Holbeach Royal Observer Corp Underground Monitoring Post

His passion, enthusiasm, dedication and hard work has ensured that one of the last remaining ROC Observation Posts has been preserved for future generations to learn about the role of the Royal Observer Corps in British History

Before



During





# Emma Brown



Emma has volunteered relentlessly to raise awareness for, conserve and protect St John on the Wall's Graveyard, which has long been overlooked and left derelict.

She gathered a group of volunteers to organise several working parties to clear and conserve areas of the churchyard and the historic tombs within, culminating in an open weekend as part of Bristol Open Doors 2019 where over a thousand visitors got to experience this hidden gem of a churchyard for the first time in over a decade





# David Bagley

*St John the Baptist Church,  
Strensham*

Volunteers are installing two new bells at the church. This ambitious project will attract more bell-ringers and training activities.

The team have worked hard to complete this while maintaining the fabric of the building and the existing 18<sup>th</sup> and 19<sup>th</sup> century frames



Jim, Michael, John and Doug greet St. Lawrence's 70,000 visitors each year, offering everyone information and a tour of the interior, and hosting national events

## Evesham St Lawrence's

*Jim Jarvis, Michael Elliman, John Macartney, Doug Littlewood*





# Mike Palmer

Mike Palmer, a Waterway Recovery Group volunteer for over 40 years and chairman for nearly 25 years, has championed best practice in volunteer canal restoration. His projects have brought substantial economic benefits to many waterside communities.

Mike has worked to increase access to the collective knowledge of waterway volunteers and staff, and was instrumental in compiling IWA's recent report, 'Waterways in progress'. He is full of ideas on how to promote their heritage.

# Milton Mausoleum

The group of volunteers at Milton Mausoleum formed in 2015 and have hosted many popular events, from hog roasts to black tie occasions, despite the lack of running of water and electricity.

They have since raised £6000 to electrify their church, which has now been installed.



The  
Heritage  
Alliance



# Ecclesiastical's Heritage Hero Award 2019

#HeritageDay  
@Ecclesiastical  
@Heritage\_NGOs



The  
Heritage  
Alliance

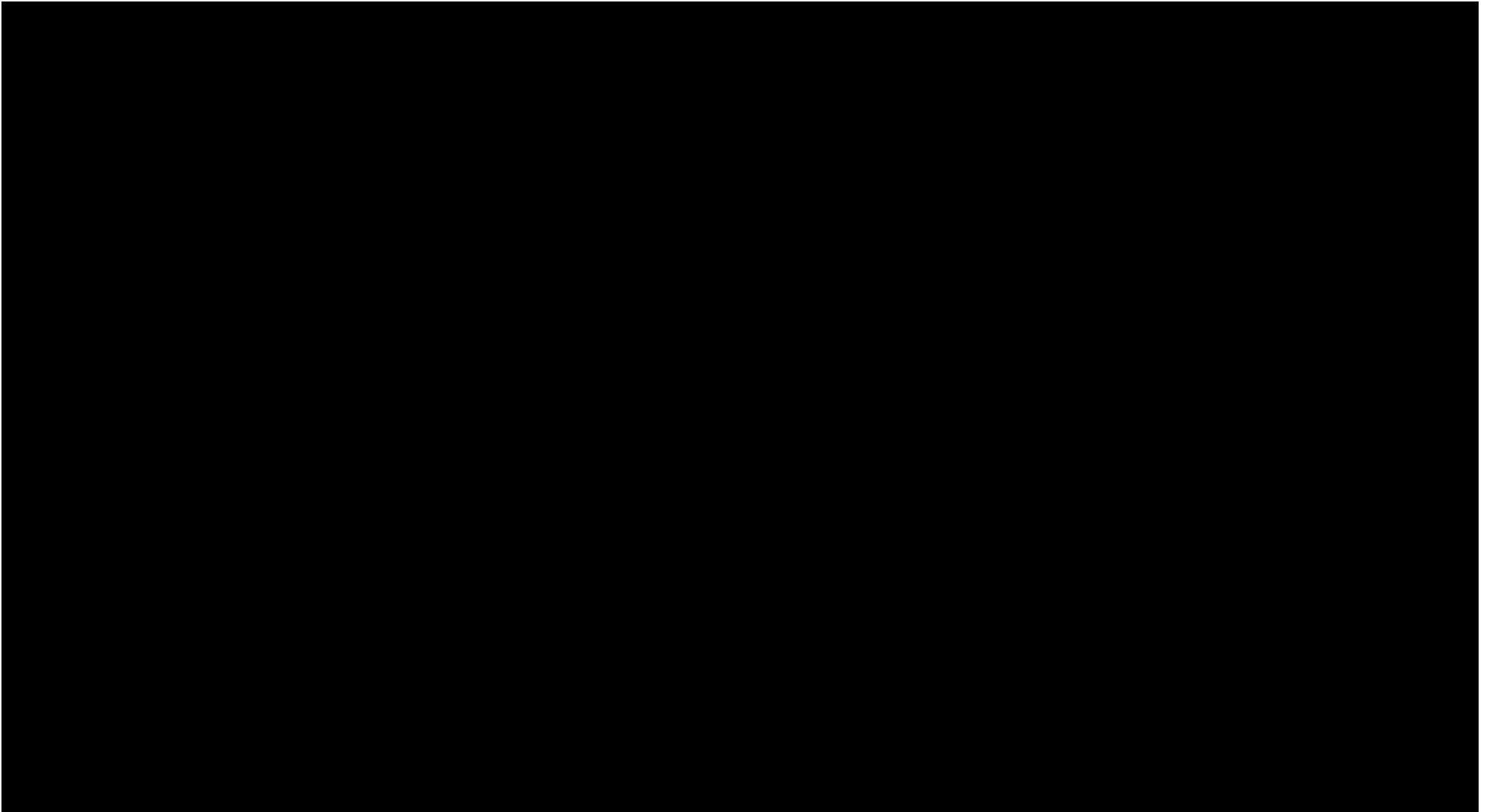


## Ecclesiastical's Heritage Hero Award 2019

# Diane White

## Buxton Civic Association

#HeritageDay  
@Ecclesiastical  
@Heritage\_NGOs



View Diane's video online here: <https://bit.ly/38ot9Mo>

The  
Heritage  
Alliance



# Ecclesiastical's Heritage Hero

## Lifetime Award

### 2019

#HeritageDay

@Ecclesiastical

@Heritage\_NGOs



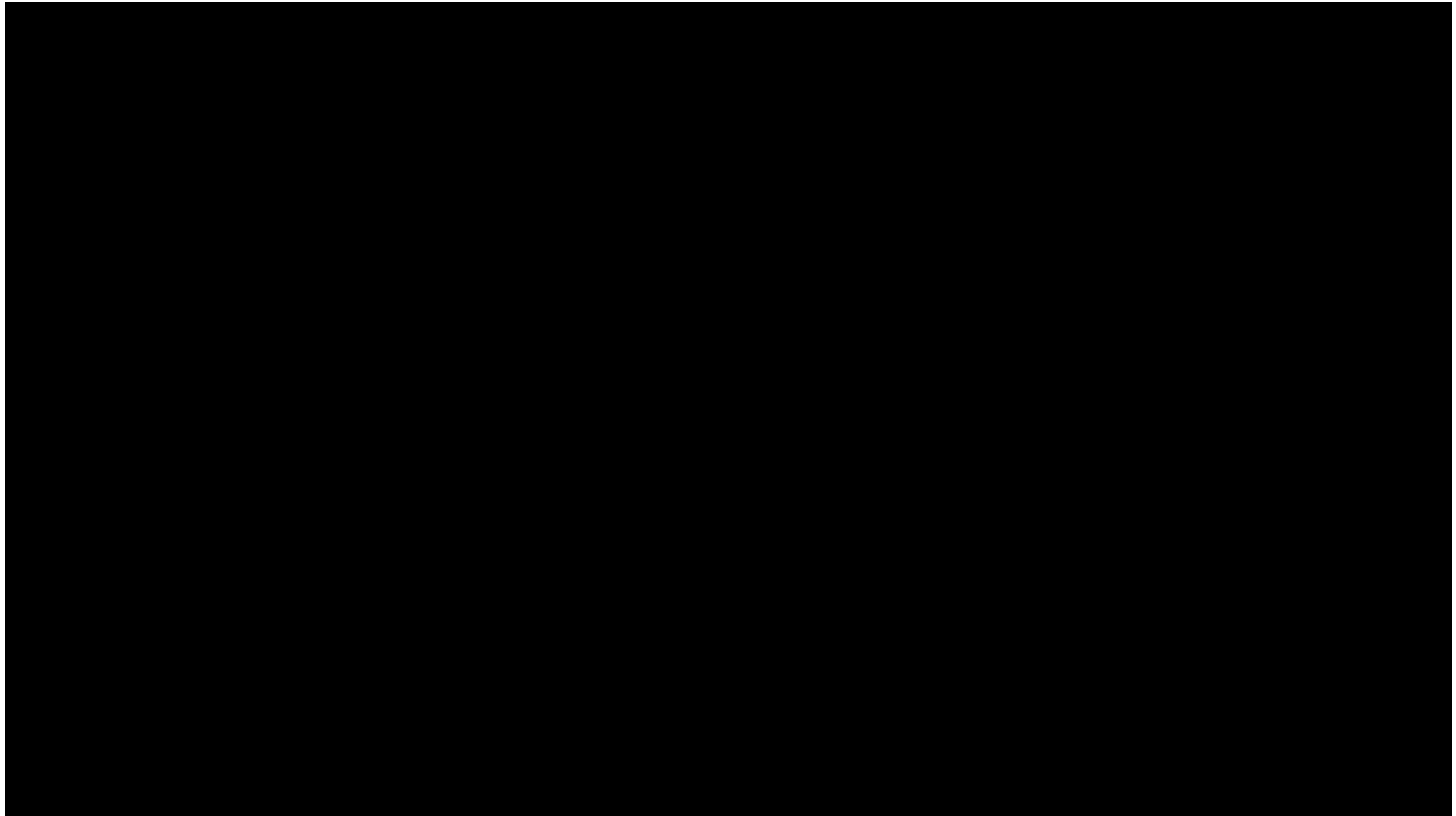
The  
Heritage  
Alliance



Ecclesiastical's Heritage Hero –  
Lifetime Award 2019

**Stephen De Silva**  
**St Albans Cathedral**

#HeritageDay  
@Ecclesiastical  
@Heritage\_NGOs



View Stephen's video online here: <https://bit.ly/2TuUO8Y>

The  
Heritage  
Alliance



# Ecclesiastical's Heritage Hero Special Award 2019

#HeritageDay  
@Ecclesiastical  
@Heritage\_NGOs



The  
Heritage  
Alliance



# Richard Norton



#HeritageDay  
@Ecclesiastical  
@Heritage\_NGOs

The  
Heritage  
Alliance

**Lunch will now be served**

**Please return to your seats by 2.15pm**

**#HeritageDay  
@Heritage\_NGOs**

The  
Heritage  
Alliance

# Update on Heritage 2020

Ben Cowell, Chair, Heritage 2020

#HeritageDay  
@Ben\_CowellDG  
@heritage2020



## HERITAGE 2020

---

Collaboration in the historic environment sector

Dr Ben Cowell

Chair, Heritage 2020 HEF subcommittee

# Heritage 2020



A framework for strategic collaboration in the historic environment sector in England with outcomes for heritage protection, skills, research, advocacy and public engagement.

# Heritage 2020

## Who's involved

- **Five working groups**
  - Capacity Building
  - Constructive Conservation & Sustainable Management
  - Discovery, Identification & Understanding
  - Helping Things to Happen
  - Public Engagement
- **42 organisations**
- **88 individuals**
- **2,400 Twitter followers**





# Heritage 2020

## Highlights of 2019

- Collaboration around high streets programmes
- Intelligence on statutory duties of LPAs
- Scoping a project to improve diversity & inclusion practices
- Understanding the nature of collaboration between heritage organisations and higher education institutions



### Statutory duties placed on local government

**Published by:** Ministry of Housing, Communities and Local Government  
**Last updated:** 21 March 2011  
**Topic:** Government  
**Licence:** [Open Government Licence](#)

#### Summary

Local authorities are bound by statute. Their functions are set out in numerous Acts of Parliament and many of these functions have associated legal duties. At no point in recent history has there been a comprehensive list of legal duties placed on local authorities. The Government therefore agreed with the Local Government Association that we should compile a list of these duties to give clarity about what these are. On 30 June 2011, a

[View full summary](#)

[Ministry of Housing, Communities and Local Government](#)

Combined Case Studie... 130 views

**Higher Education Institution**

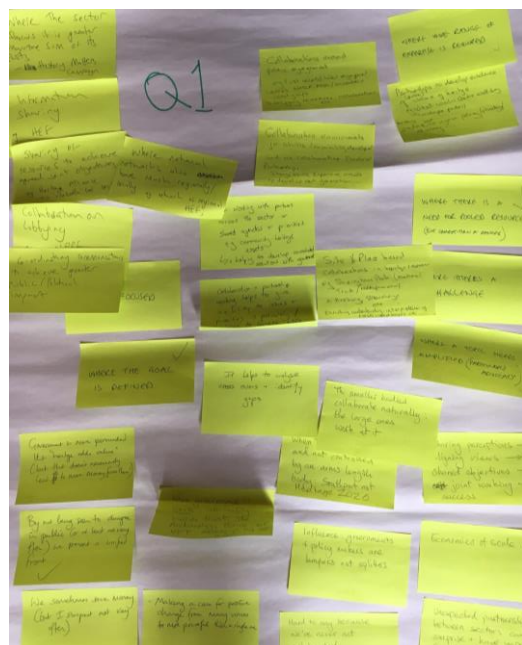
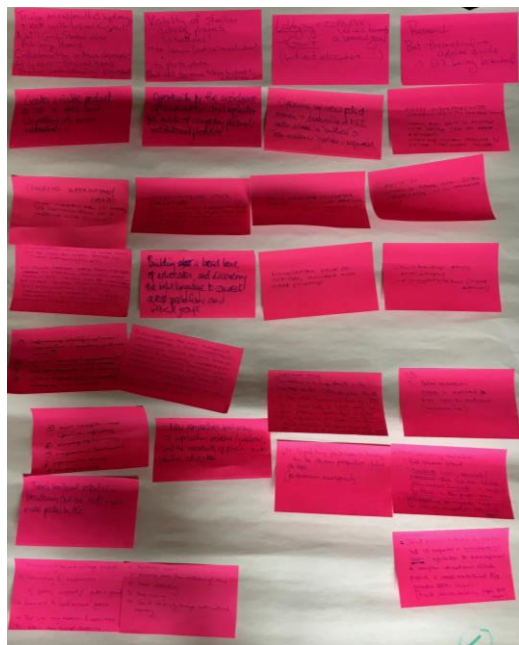
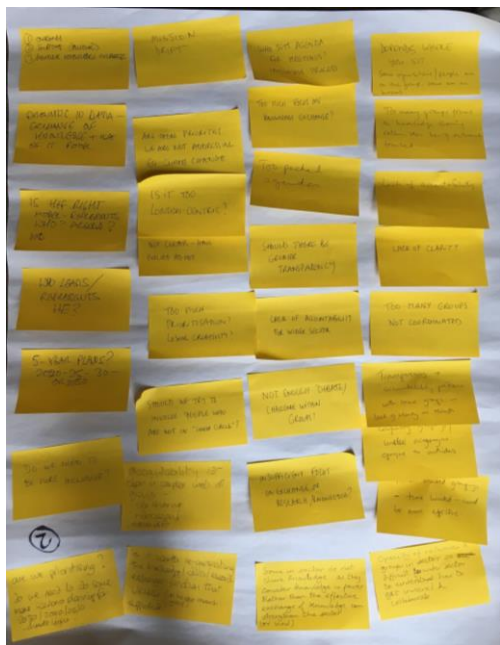
- The University of Manchester
- University of Liverpool
- University of Portsmouth
- Kingston University
- ... 96 more

**Collaborating Organisation**

- Imperial War Museum - London & Manches...
- Portsmouth City Museum
- Kingston Museum
- National Trust Commission
- ... 78 more



## Next steps



Email: [heritage2020@theheritagealliance.org.uk](mailto:heritage2020@theheritagealliance.org.uk)



@Heritage2020 @HeritageChat

The  
Heritage  
Alliance

# 'HEDx' Talks

From Heritage Alliance Members

#HeritageDay  
#HEDx



The  
Heritage  
Alliance

# Get Yourself Connected

Crispin Truman, Chief Executive, CPRE

**#HeritageDay**

**@CrispinTruman / @CPRE**



The  
countryside  
charity

# Rural heritage, rural life

## GET CONNECTED

Crispin Truman, CEO CPRE  
The countryside charity





The  
countryside  
charity









The  
countryside  
charity













The  
Heritage  
Alliance

# Heritage Open Days: New Perspectives and Unsung Stories

Annie Reilly, Head of Producing, Heritage Open Days

#HeritageDay  
@heritageopenday



# Heritage Open Days: Unsung Stories & New Perspectives



heritage open days



National  
Trust

Supported by players of



Awarded funds from





# The Turing Trial: Regina v Turing and Murray



*from*  
**WIVENHOE**  
*with*  
**LOVE**











Joe Meek: 304  
Holloway Road





HOLLOWAY

EXPRESS

sensations

MANIC  
RESTAURANT

OPEN 24 HOURS - OFF LICENCE - BAKERY

BAKERY - FRESH FRUIT & VEG - FREE CASH MACHINE

sensations

★ SENSATIONS ★



# Gilbert & Gordon: Then All the World Could See How In Love We Are











put her forward

put her forward

put her forward

put her forward









#### Phyllis Opoku-Gyimah

Graceland House, University of the Witwatersrand, 14 September 2019

Phyllis, also known as Lady Phyll, is the powerhouse behind UK Black Trade and has been one of the most visible African women in politics in the UK. In her many roles she acts as a community leader and organizer, including as a senior official at the Public and Commercial Services (PCS) trade union, a Board member of a 20+ African business network, a Board member of the Public Health Foundation, and a Board member of the Black Women's Trust. She has also been a prominent voice in the UK's anti-racism movement, leading the UK's first anti-racism summit in 2019. Lady Phyll is a powerful advocate for social justice and has been instrumental in the UK's anti-racism movement, leading the UK's first anti-racism summit in 2019. She is a powerful advocate for social justice and has been instrumental in the UK's anti-racism movement, leading the UK's first anti-racism summit in 2019.



# Dare to Dream









I #DareToDream...  
of  
Joyful Bees

I #DareToDream...  
of excellent  
HEALTHCARE  
for all

I #DareToDream...  
of a healthy  
planet

I #DareToDream...  
of Happy Fish

I #DareToDream...  
of  
Gender Equality

made with courage and care  
Craftivist Collective



# Unsung Stories





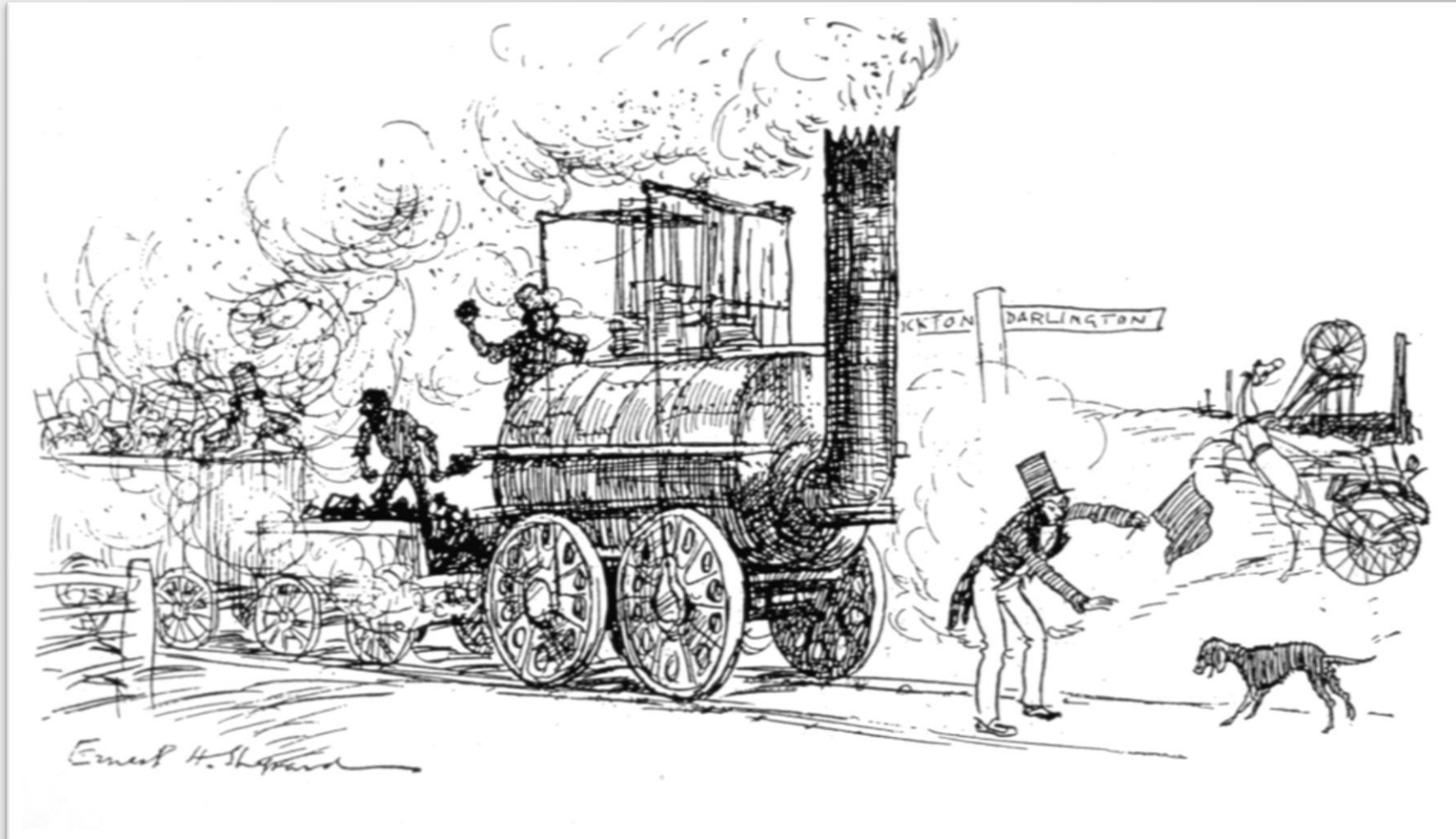
The  
Heritage  
Alliance

# Building International Links: Lessons Learned

Trish Pemberton, Chair and Trustee, Friends of  
Stockton and Darlington Railway

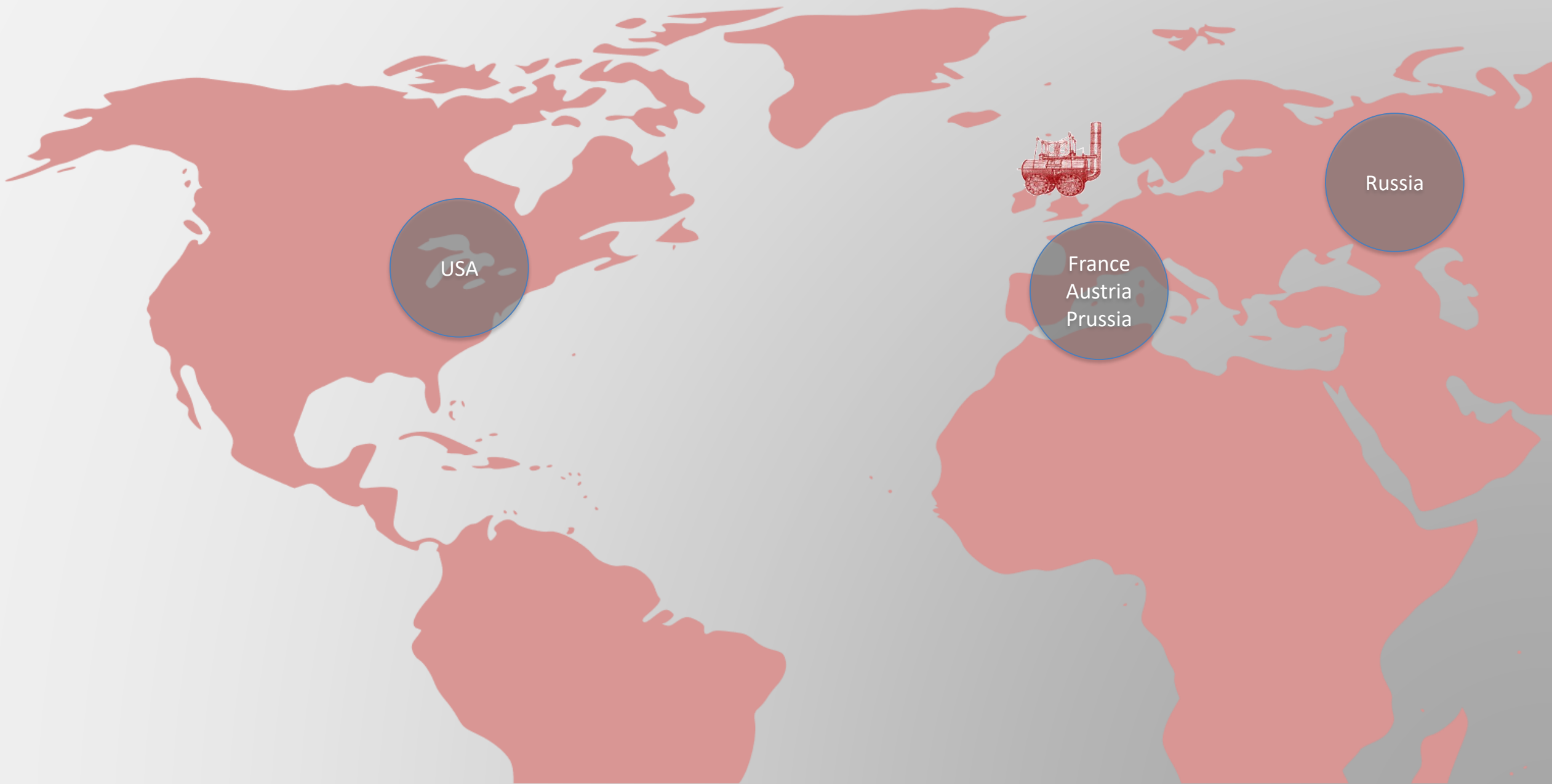
#HeritageDay  
@fsdr1825

# Building International Links: Lessons Learned



*200 Years of the Stockton & Darlington Railway 1825 - 2025*





*International Visitors to Shildon 1825 - 1830*

## *Be Clear What You Want to Achieve*

- Confirm the importance of the S&DR to world history by linking with key international organisations that recognise its significance
- Create international working partnerships in the lead up to 2025 and beyond



## *Be Clear What You Want to Achieve*

- Use this to persuade central government to give its political and financial support to the S&DR project

# American History Museum, the Smithsonian





# *Choose Your Timing Carefully*

- Not too soon
- You must have networks in place
- You must build links before you make your visits

# Baltimore & Ohio Railroad Museum





# S&DR Rail Heritage Board Partners

- A1 Trust
- Darlington Borough Council
- Durham County Council
- Friends of the Stockton & Darlington Railway
- Historic England
- Science Museums Group/National Railway Museum
- Network Rail
- Northern Rail
- Stockton Borough Council
- Tees Valley Combined Authority
- LNER



# Lexington Group

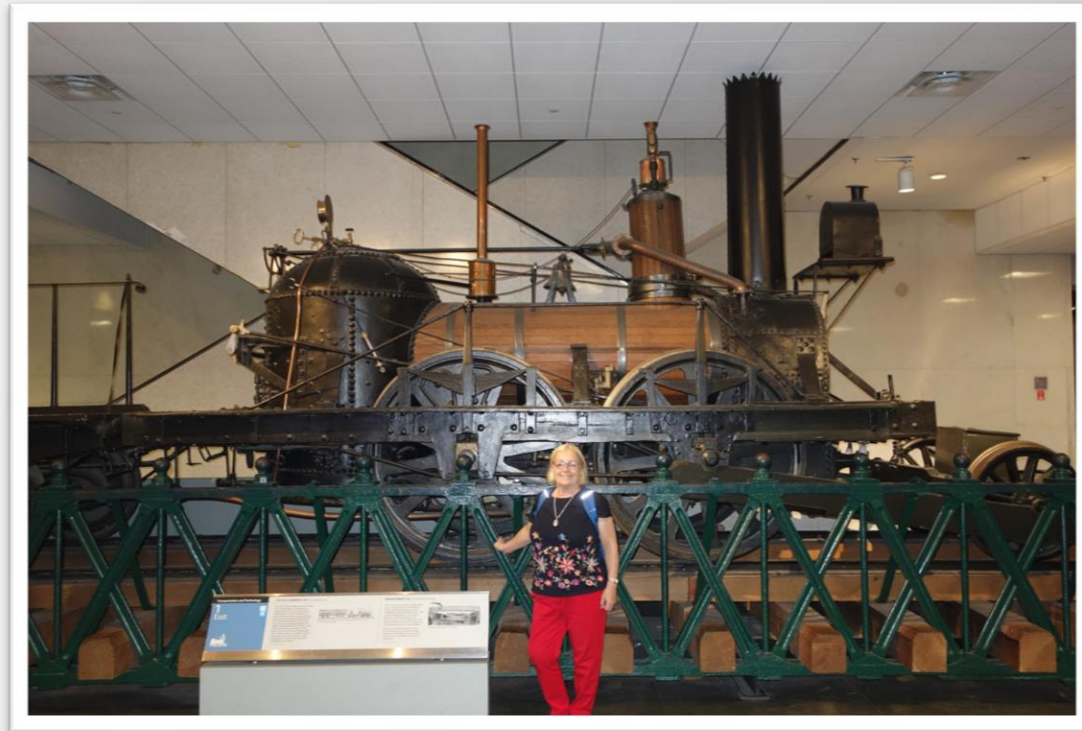




## *Establish Your Credibility Before You Visit*

- National conference 2015
- Journal, The Globe and website
- Evidence to parliamentary groups
- Adjournment debates in parliament
- Obtain a clear mandate from partners on who you represent and speak for

# *Exploit Unexpected Opportunities*





# *Plan Follow Up: a Long Term Strategy*

- Take a photographer and blog
- Report back to partners and sponsors
- Meet new MPs
- Meet Tees Valley Combined Authority Mayor
- Plan follow up visits to USA
- Use visit to influence central government

The  
Heritage  
Alliance

# Heritage Debate 2017: Heritage, Health & Wellbeing Report next steps

Giles Woodhouse, Chief Strategy Officer,  
Wessex Archaeology

#HeritageDay  
@wessexarch



A photograph of three people working at a light blue table outdoors. On the left, a man with a shaved head and a dark blue shirt is focused on a task. In the center, a woman with blonde hair in a braid, wearing a blue long-sleeved shirt and a dark vest, is also working. On the right, an older man with long white hair, a full white beard, and glasses is working. He is wearing a dark jacket over a red shirt and a tan vest. The table is cluttered with various items, including a white plastic bottle, a brown bowl, a green plastic bag, and some tools. The background shows a dirt area with some greenery and a corrugated metal structure.

# Heritage, Health & Wellbeing Report: Next Steps

Giles Woodhouse  
Chief Strategy Officer, Wessex  
Archaeology



# Rewind to Heritage Debate 2017

## *'Is heritage good for your health?'*

Increasing interest across Heritage, Arts and Culture Sectors



- THA's 2017 Heritage Debate began our discussion on the relationship between health and the heritage sector
- Evidence has become increasingly available to demonstrate that heritage is good for people's health and wellbeing
- Heritage participation can improve mental health and the historic environment can provide an attractive backdrop to physical activity

*The Debate explored the following:*

1. How can the sector do better to build bridges with the world of public health?
2. What claims can realistically be made for the health benefits of heritage?
3. Where does heritage best intersect with the public health needs of the nation?



## Case Study – Canal & River Trust



*“For me personally, it’s the best thing because it gets me out of the house and back into a routine. It’s something to aim for and gets me mucking in again. It’s doing me the world of good being here” – Afghanistan Veteran*

# Well City Salisbury Project



**WILTSHIRE  
CREATIVES**

**wessex  
archaeology**



# Next Steps ....

- Request for more case studies
- Invitations for round table discussions on recommendations
- 2020 report publication



Alexandra Park & Palace –  
Sensory Suitcase

The  
Heritage  
Alliance

# Ecclesiastical Insurance

Faith Kitchen, Heritage & Education Director,  
Ecclesiastical Insurance

#HeritageDay  
@Ecclesiastical



# Risks and Opportunities of Technology in the Heritage Sector

Faith Kitchen, ACII Chartered Insurer –Heritage Director

# Overview of Ecclesiastical Insurance



A specialist insurance and financial services company with over 130 years of experience in the Heritage sector

Owned by a charity, Allchurches Trust, we pass our available profits to our owner, with a target of £100m to charity

We are a leading insurer of:

- Charity
- Education
- Art & Private Client
- Faith
- Heritage – segmented in to:
  - **Arts and Culture** – comprising museums, galleries, theatres, cinemas, libraries, concert halls
  - **Historic Britain** – comprising historic landmarks e.g. castles, forts, palaces, stately homes, visitor centres, historic docks, mills, lighthouses
  - **Heritage Business and Leisure** – heritage organisations or owner occupied businesses run from Heritage buildings, hotels, spas, retreats

We are the UK's leading insurer of Grade I listed properties.



# Prevention



# Preventative technology



Technology is being utilised in many different ways to prevent losses and proactively manage maintenance.

Drones, sensors and new technology have all been deployed in Heritage settings.

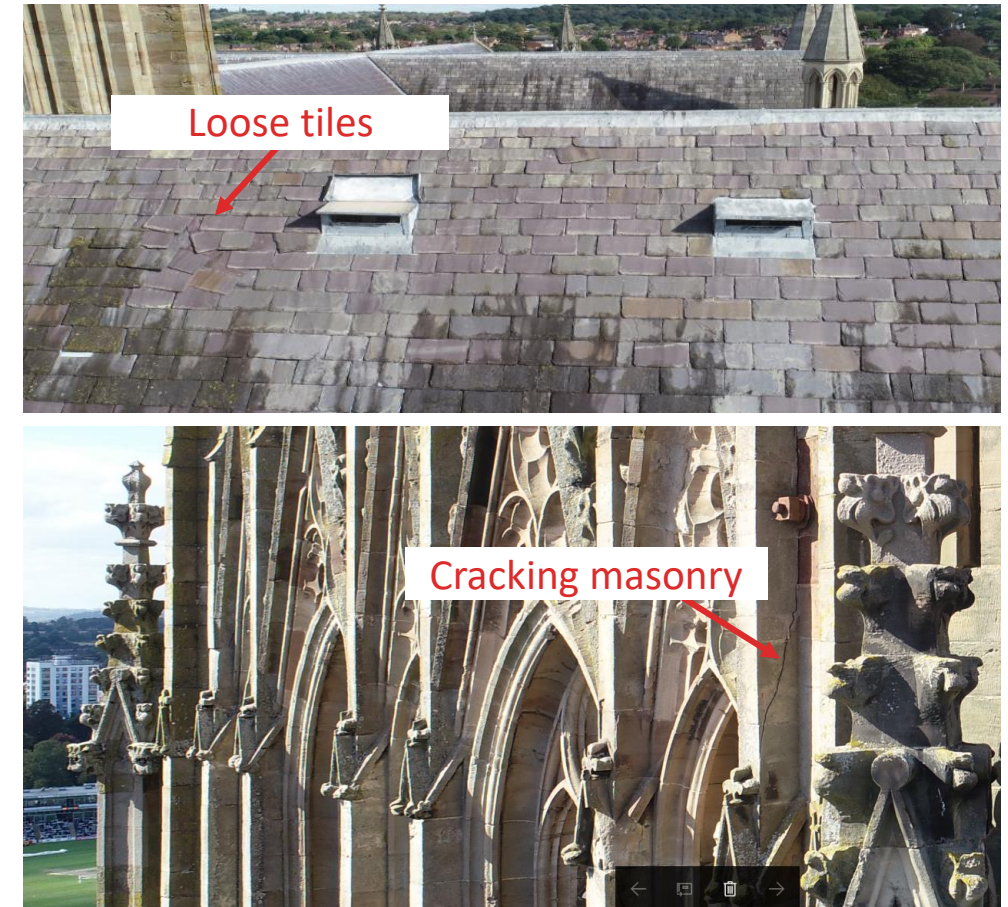


# Drone inspections

St Hilda's Church, Halifax



Worcester Cathedral



# Sensor technology

## The project: SHEPHERD

- The provision of constant property monitoring using IoT and machine learning via tech company Shepherd technology
- There is a total of 3,366 data points measured in Kenwood, 3,000 from the building management system (BMS) and 366 sensors

Kenwood House – English Heritage



## Predicted benefits:

- Loss prevention or minimisation
- Reduction in energy costs
- More focussed maintenance spend
- Flag issues early and allow for more proactive management of heritage buildings

### PHASE 1

#### SURVEY

A full forensic Mechanical and Electrical survey is carried out to ensure a full understanding of the property systems, services and performance.

### PHASE 2

#### IMPLEMENTATION

Shepherd has the ability to extract data from the already existing Building Management System and the humidity monitoring system. Then supplementary sensors will be deployed across all systems, devices and assets in the property.

### PHASE 3

#### LEARN PHASE

The Shepherd Platform needs one month of data to learn how the building is run.

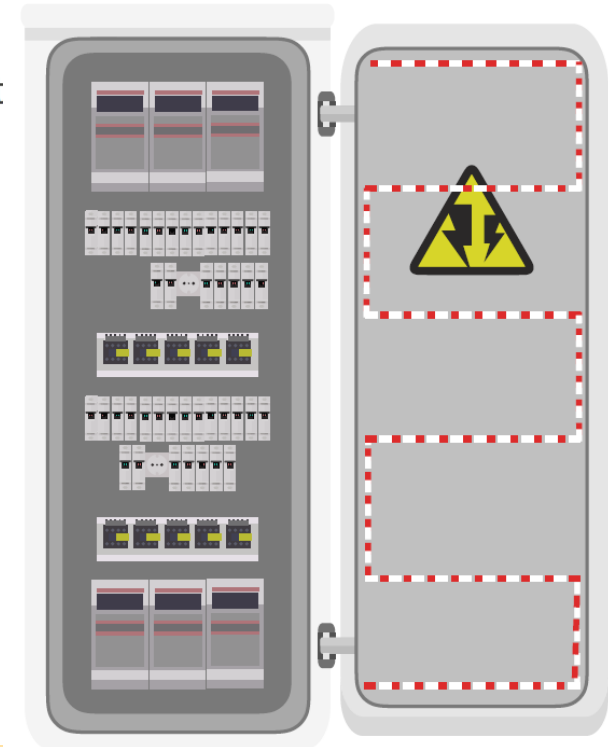
### PHASE 4

Fully operational for one year, to test across all seasons.



## WHAT IS PYROCORD?

PyroCord is an autonomous fire suppression system that use nanotechnology to extinguish an electrical fire at a very early stage, before it gets out of hand. It is designed for use in both residential and commercial premises. The cord contains microcapsules of fire-extinguishing agent NOVEC 1230 and are installed in fuse boxes and electrical distribution cabinets.



When heated to 160 degrees Celsius, the shells of the capsules burst, discharging the extinguishing agent directly onto the place of fire. The heat is removed from the fire thereby removing one side of the fire triangle and extinguishing the fire.

# Interpretation





# Virtual reality

---

## St Augustine's Abbey – English Heritage



- Make sure new technology is insured and secured
- Health & safety, how will visitors be moving differently around the site?
- Intellectual property

# Support

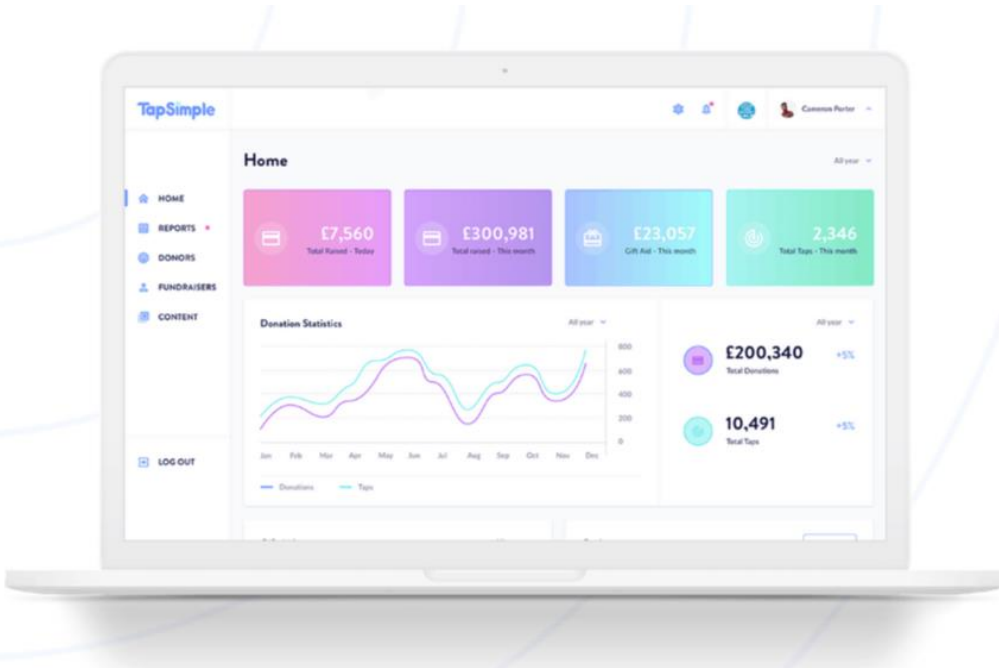




# Cashless Fundraising



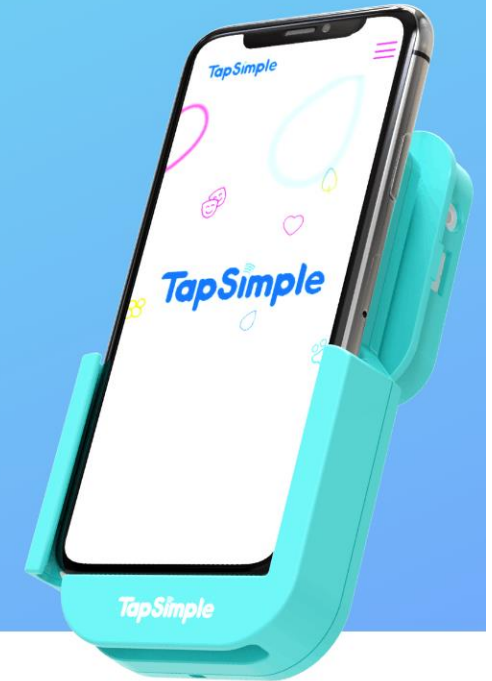
- Cashless giving devices
- GDPR compliant
- Gift aid
- Data



## The Clip

A simple, pocket-size device that pairs with your smartphone. Contactless, Chip & Pin and so much more!

Take your fundraising to the next level



- Scanning of objects and artefacts
- Use of medical tools, such as endoscopes, to look under the surfaces of books/drawings
- Check carefully that the pigments / inks / materials used don't react to the particular light used.





- **Cyber skills and insurance**
- **Trustee / Board awareness and understanding**
- **Digital knowledge and understanding**
- **Health & Safety**
- **Security**
- **Intellectual property rights**
- **Does the technology introduce new risks?**



# The Heritage Barometer



- A new insight study developed with experts from across the heritage sector
- The risks and opportunities facing the heritage sector
- A focus on technology – for business, for protection, for engagement
- Following our series of risk barometers
- Published mid-2020.

[www.ecclesiastical.com/insights](http://www.ecclesiastical.com/insights)







Ecclesiastical Insurance Group

Beaufort House

Brunswick Road

Gloucester GL1 1JZ

0345 777 3322

[information@ecclesiastical.com](mailto:information@ecclesiastical.com)

Ecclesiastical Insurance Office plc (EIO) Reg. No. 24869. Registered in England at Beaufort House, Brunswick Road, Gloucester, GL11JZ, United Kingdom. EIO is authorised by the Prudential Regulation Authority and regulated by the Financial Conduct Authority and the Prudential Regulation Authority. Firm Reference Number 113848.

EIO and ELL are authorised by the Prudential Regulation Authority and regulated by the Financial Conduct Authority and the Prudential Regulation Authority.

The  
Heritage  
Alliance

# Heritage Digital Update

Josie Fraser, Head of Digital Policy, National Lottery  
Heritage Fund & Lizzie Glithero-West, Chief Executive,  
The Heritage Alliance

#HeritageDay

@josiefraser / @HeritageFundUK

@heritage\_lizzie / @Heritage\_NGOs



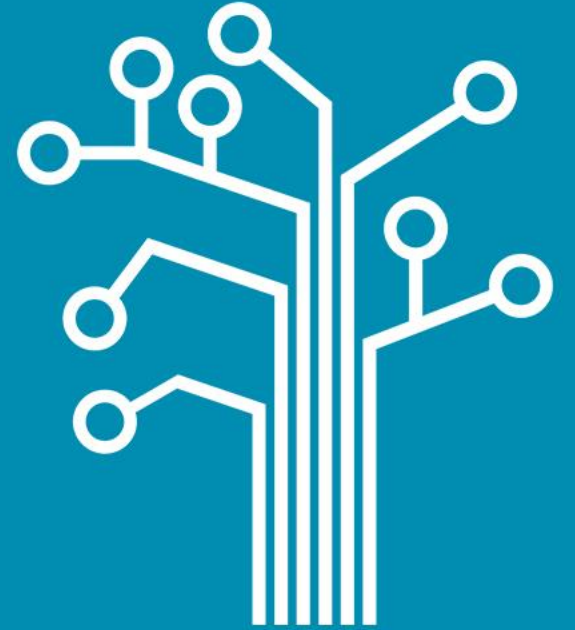
Whatever era it  
comes from



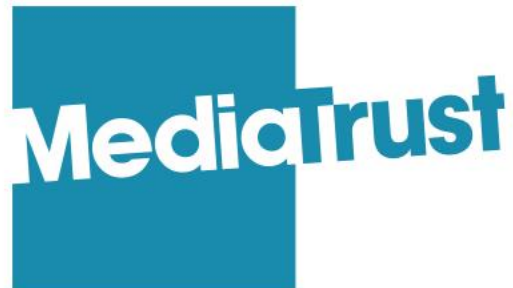
it can thrive  
in the digital era



# HERITAGE DIGITAL



The  
Heritage  
Alliance



naomi korn  
ASSOCIATES





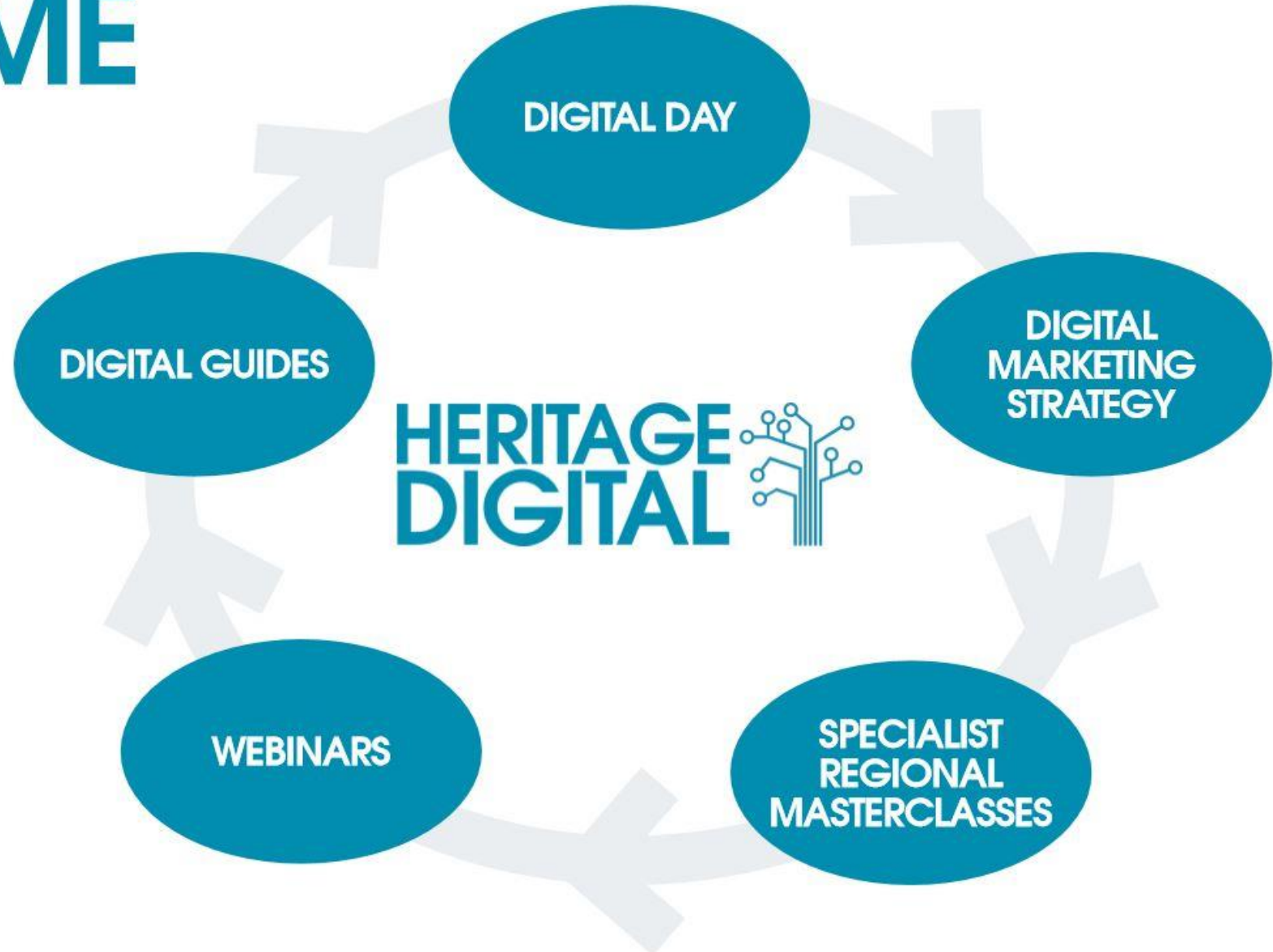
# INTEGRATED DIGITAL TRAINING PROGRAMME

THE HERITAGE DIGITAL PROGRAMME WILL COVER FOUR KEY DIGITAL LEARNING TRACKS, IDENTIFIED AS PRIORITY DEVELOPMENT AREAS BY THE SKILLS SURVEY



# INTEGRATED DIGITAL TRAINING PROGRAMME

THE HERITAGE DIGITAL PROGRAMME WILL BE OPEN TO ALL HERITAGE ORGANISATIONS IN THE UK. ORGANISATIONS CAN ENGAGE WITH ONE OR MULTIPLE ELEMENTS OF THE PROGRAMME. WE WILL DEVELOP A SHORT DIGITAL SKILLS SURVEY TO TRIAGE ORGANISATIONS UNSURE OF THEIR DIGITAL SKILLS GAPS AND PRIORITIES. BY IDENTIFYING A KEY AREA OF SUPPORT WE WILL BUILD A TAILORED DIGITAL PROGRAMME FOR THE ORGANISATION.





The  
Heritage  
Alliance

# Peter Ainsworth

Chairman, The Heritage Alliance

Closing Remarks

#HeritageDay  
@Heritage\_NGOs

The  
Heritage  
Alliance

# We will now be holding our AGM for 2019.

If you are not a member of the Alliance, you are now welcome to explore the Tower at your leisure.  
We thank you for attending Heritage Day 2019.

#HeritageDay  
@Heritage\_NGOs